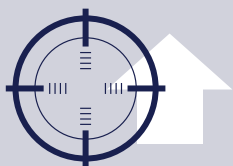


# Glucagon ELISA

This cutting-edge kit is designed to accurately measure Glucagon levels in human plasma using our advanced ELISA (Enzyme-Linked Immunosorbent Assay) technology.

**REF** CAN-GLN-390

## Features of the DBC Glucagon ELISA kit



High Sensitivity



Short Incubation Time



Low Cross-Reactivity



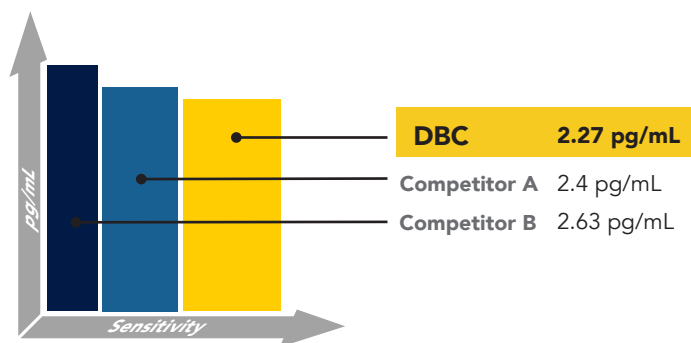
High Precision

**plus** the DBC Glucagon ELISA kit is **EASY TO USE** (no shake & room temperature incubation), **PATIENT FRIENDLY** (no Biotin is used), **END-USER FRIENDLY** (samples collected in regular EDTA tubes without the addition of inhibitors) and **FDA EXEMPT!**

## Performance

### Sensitivity

DBC's kit ensures the lowest **LoD**, providing the **Highest Sensitivity** rating among the kits tested.



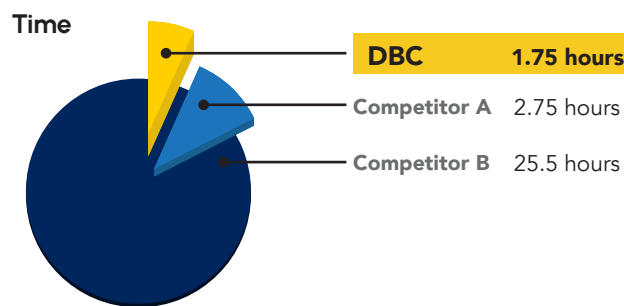
**LoB:** 96 replicates of each lot of Cal A (4 lots total) across 6 tests (3 kit lots, 2 tests for each kit lot) were run.

**LoD:** 96 replicates of each low-value sample (4 samples in total) across 6 tests (3 kit lots, 2 tests of each kit lot) were run.

**LoQ:** Lowest glucagon concentration that produces a sample CV% of less than 20%.

Parameter	DBC	A	B
LoB	0.80 pg/mL	No data	No data
LoQ	5.33 pg/mL	No data	5.25 pg/mL

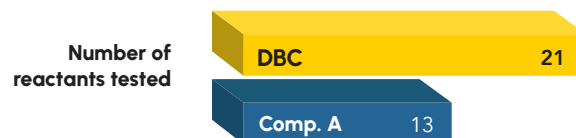
### Incubation



	DBC	A	B
Shaker	No	Yes	Yes
Temperature	Room	Room	4° overnight

### Cross-Reactivity

**No detectable cross-reactivity for 21 cross-reactants** (including Oxyntomodulin and Glicentin).



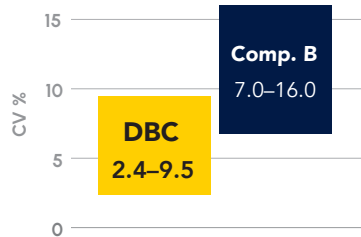
## Repeatability

n = 80 results per sample (20 testing days x 2 runs x 2 replicates). CV ≤ 5.6%

DBC	≤ 5.6
Comp. A	≤ 4.8

## Reproducibility

n = 75 results per sample (3 conditions x 5 testing days x 5 replicates). CV 2.4–9.5%

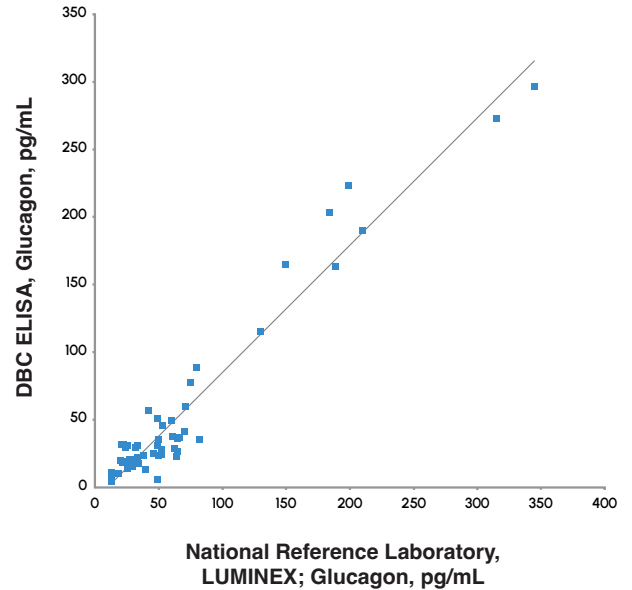


## Lot-To-Lot Precision

n = 75 results per sample (3 lots x 5 testing days x 5 replicates). CV 2.5–11.8%

## Commutability

Correlation between DBC Glucagon ELISA and National Reference Laboratory, LUMINEX:  $r^2 = 0.94$  ( $r = 0.97$ ), slope 0.94 shows significant commutability.



## Interference

DBC	A	B
36 potential interferences were tested. No interference by EP07/EP37 and published literature.	No interference for Hemoglobin, Biotin, Intralipids, and Bilirubin at two times their physiological concentration.	Interference 36% for Oxyntomodulin 1050 pg/mL, hemoglobin > 50 mg/dL, interfere test.

## Kit Accelerated Stability

DBC	A	B
At 37°C, stable for up to 11 days	no data	no data

## Reference Range

DBC	A	B
6.7–66.6 pg/mL, n = 124, fasting	13–159 pg/mL, undifferentiated population (diabetic and non-diabetic), n = 1533	≤ 5.2–62.7 pg/mL, n = 121, fasting

## In-Use Stability

DBC	A	B
Up to 3 months	no data	no data

At Diagnostics Biochem Canada (DBC), we pride ourselves on fostering a diverse and inclusive work environment, where our dedicated team continually explores new technologies to improve disease diagnostics. With over 50 years of experience, DBC has established a legacy of innovation in developing high-quality ELISA test kits, specializing in immunoassays that enhance diagnostics and public health.



384 Neptune Crescent  
London, Ontario N6A 1M1  
Canada

519-681-8731

[www.dbc-labs.com](http://www.dbc-labs.com)